



JSPM's

## JAYAWANT INSTITUTE OF MANAGEMENT STUDIES

(Approved by AICTE, New Delhi, Recognised by Gov. of Maharashtra & Affiliated to Pune University)

S. No. 80/2, Pune-Mumbai Bypass Highway, Tathawade, Pune – 411033.

Phone: +91-8237076937/38 Telefax: +91-20-22933424.

E-mail: [jims1@vsnl.net](mailto:jims1@vsnl.net) Website: [www.jspm.edu.in](http://www.jspm.edu.in)



**Prof. T. J. Sawant**  
D.E.E., B.E. (Elec.) MISTE  
Founder- Secretary

**Dr. Priyanka A. Singh**  
B.Sc. (Hons), MBA, Ph. D.  
Director

### Physical Facilities

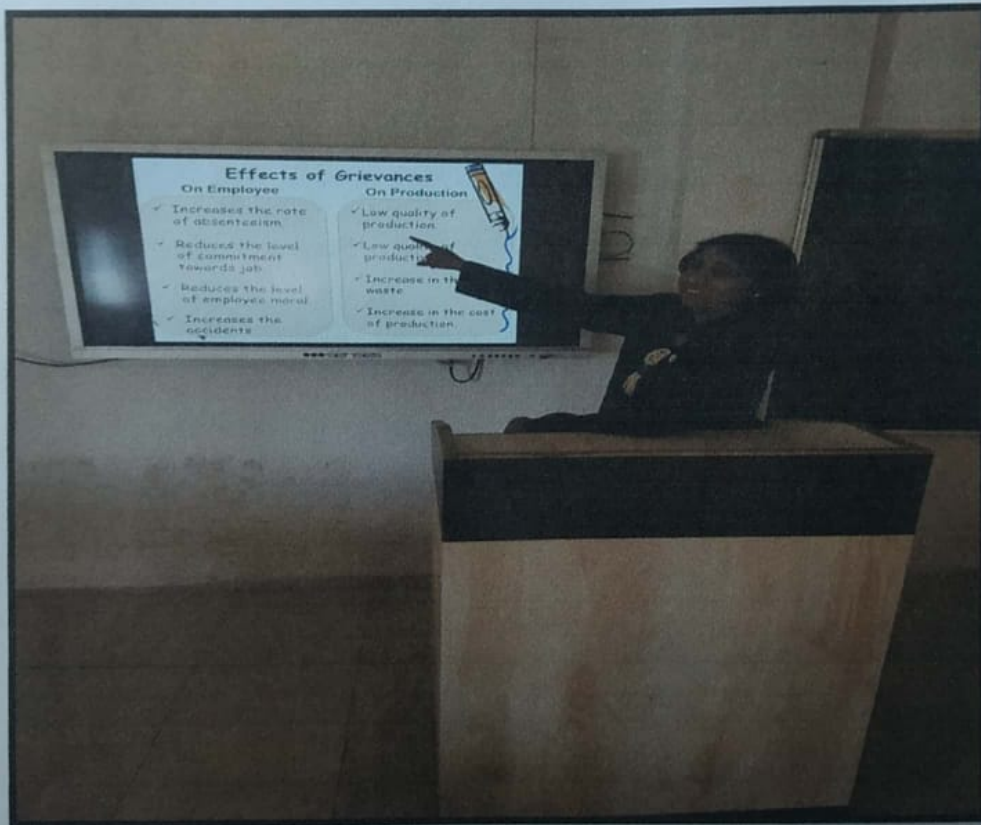


Building Main Entrance

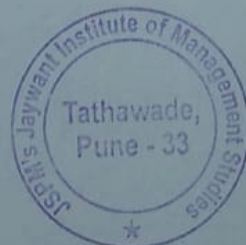




Classroom



Smart Classroom



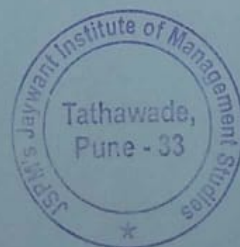




Tutorial Room



Computer Lab

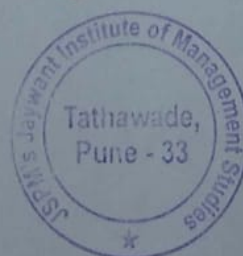




Computer Center



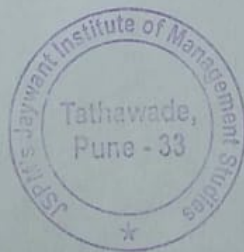
Library Reading Room





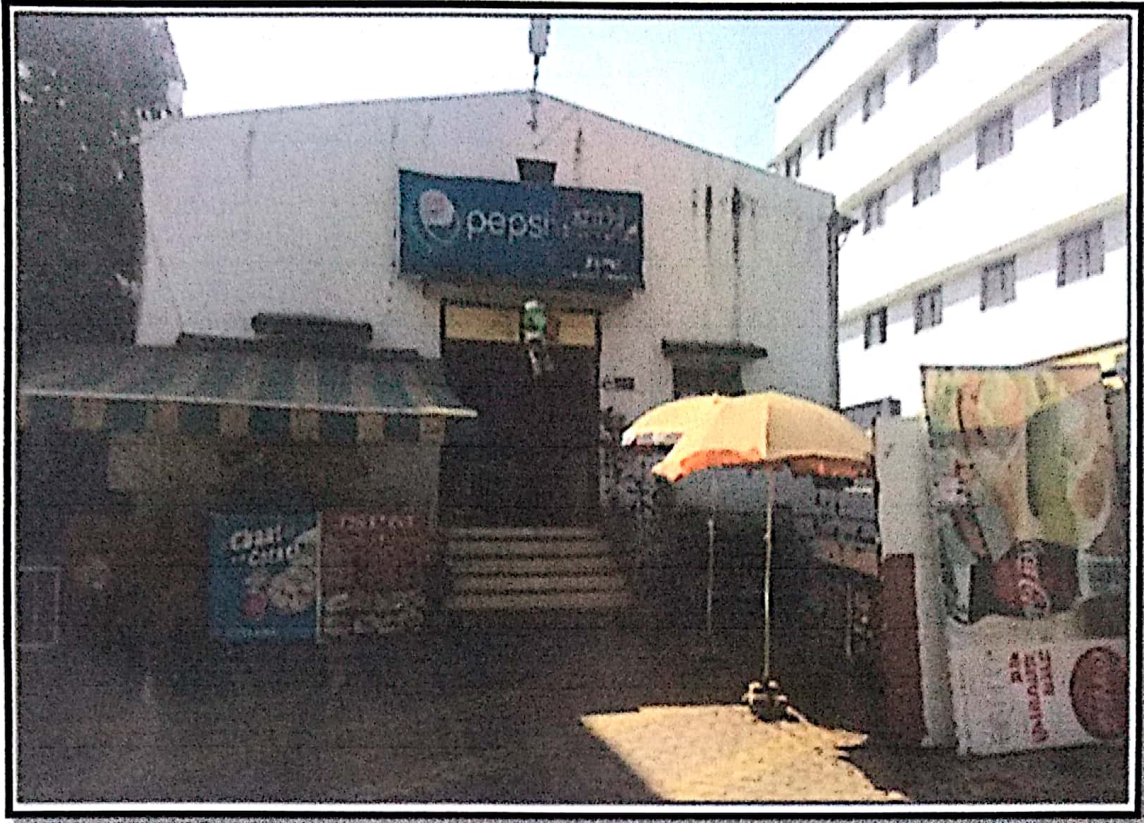


Syndicate Room





## Other Faciltites



Canteen



Hostel (separate Boys and Girls Hostels )







Ambulance (Common for JSPM Tathawade Campus)



Transport Facility







Water Purification Plant



Security







IDBI Bank ATM



Stationary, General store and Reprographic Facility







Ramp for Physically disabled



Toilet for Physically disabled



*Dr. Priyanka Singh*  
Dr. Priyanka Singh  
Director